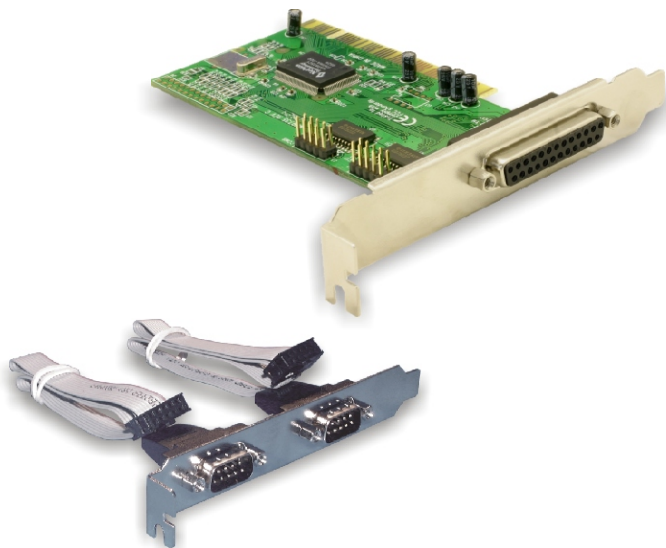




PCI card 2 x Serial + 1 x Parallel





Description

The DeLock PCI Card expands your PC by two external serial ports, also one external parallel port. You can connect devices like scanner, printer, mouse etc. to the card.

Specification

Serial Interface

- Compatible with 16C550 UART
- FIFO: 16 byte
- Data transfer rate up to 1 Mbps
- 2 x Pin header, with rear bracket with two DB9

Parallel Interface

- SPP, PS2, EPP, ECP compatible IEEE 1284
- FIFO: 16 byte
- Data transfer rate up to 1.5 Mbps
- 1 x DB25 parallel port

- Plug & Play
- Automatically selects IRQ and I/O
- Supports PCI IQR sharing
- 32-Bit PCI standard 2.1

System requirements

- PC with one free PCI Slot and one rear slot
- Windows 98SE/ME/2000/NT4.0/XP, Linux, DOS

Package content*

- PCI card + rear bracket
- Driver CD
- User manual

*Make sure that product package contains all items before operation. If any item is missing or damaged, then please contact your dealer immediately.

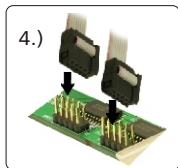


Hardware Installation

Note:

Follow the general instructions for installation of the card. If necessary, read the manual of your computer, or ask a specialist for help.

1. Turn off your PC, and unplug the power cord.
2. Open the housing.
3. Remove the slot holder from the available PCI slot and the rear slot for the 2 serial ports.
4. Before you can insert the card into the PCI slot, please connect the 2 ports of the serial rear bracket to the PCI card. Follow this instructions:
5. Insert the card straight and carefully into the free PCI slot, until it is well seated.
6. Use a screw to attach the card to the housing.
7. Fix the rear bracket with a screw also on the housing. Reattach the housing, and connect the power cord to the AC adapter.



Driver Installation

Windows XP Service Pack 2

Controller installation

1. After installing the hardware and starting your computer the hardware assistant will appear. Choose the option "**No, not this time**" and click "**Continue**".
2. Put the driver CD in the CD-ROM drive, choose "**Install software automatically**" and click "**Continue**".
3. Choose the driver "**nm9835s**" and click "**Continue**".
4. When driver is located, click "**Continue installation**".
5. Click "**Finish**".



Install parallel interface

6. The hardware assistant appears with a newly found parallel interface. Choose "**No, not this time**" and click "**Continue**".
7. Choose "**Install software automatically**" and click "**Continue**".
8. Click "**Continue installation**".
9. Click "**Finish**".

Install serial interface

10. The hardware assistant appears with a newly found serial interface. Choose "**No, not this time**" and click "**Continue**".
11. Choose "**Install software automatically**" and click "**Continue**".
12. Click "**Continue installation**".
13. Click "**Finish**".
14. When the second serial port is found, repeat steps 1 – 4.

Your PCI card is installed and ready for use.

Windows 2000/XP Service Pack 1

Controller installation

1. After installing the hardware and starting your computer the hardware assistant appears.
2. Put the driver CD in the CD-ROM drive, choose the driver "**nm9835s**" and click "**Continue**".
3. When driver is located, click "**Continue installation**".
4. Click "**Finish**".

Install parallel interface

5. The hardware assistant appears with a newly found parallel interface. Choose "**Install software automatically**" and click "**Continue**".
6. Click "**Continue installation**".
7. Click "**Finish**".



Install serial interface

8. The hardware assistant appears with a newly found serial interface. Choose "**Install software automatically**" and click "**Continue**".
9. Click "**Continue installation**".
10. Click "**Finish**".
11. When the second serial port is found, repeat steps 1 – 4.

Your PCI card is installed and ready for use.

Windows 98/98SE/ME

Controller installation

1. After installing the hardware and starting your computer the hardware assistant appears.
2. Put the driver CD in the CD-ROM drive and click "**Continue**".
3. Choose the option "**Search for best driver**" and click "**Continue**".
4. Choose the option "**CD ROM drive**" and choose the path: CD ROM drive NetMos\nm9835s\Win98, click "**OK**", then "**Continue**".
5. Click "**Continue**". The driver is being installed.
6. Click "**Finish**".
7. Your PC must be restarted now, click "**Yes**".
8. After rebooting the device is ready for use.



Support Delock

If you have further questions, please contact our customer support support@delock.de / www.delock.de or phone 0700 - DELOCKGE (0700 - 335 625 43).

You can contact our service hotline during the following times:

Mon - Fri: 9:00 - 17:30 pm charge 0,12 €/min*

All callers outside of Germany dial please 00493081789324.

* A connection fee applies according to fee schedule of Deutsche Telekom AG or your local telephone provider.

You can find current product information on our homepage:

www.delock.de

Final clause

Information and data contained in this manual are subject to change without notice in advance. Errors and misprints excepted.

Copyright

No part of this user's manual may be reproduced, or transmitted for any purpose, regardless in which way or by which means, electronically or mechanically, without explicit written approval of Delock.

Edition: 11/05