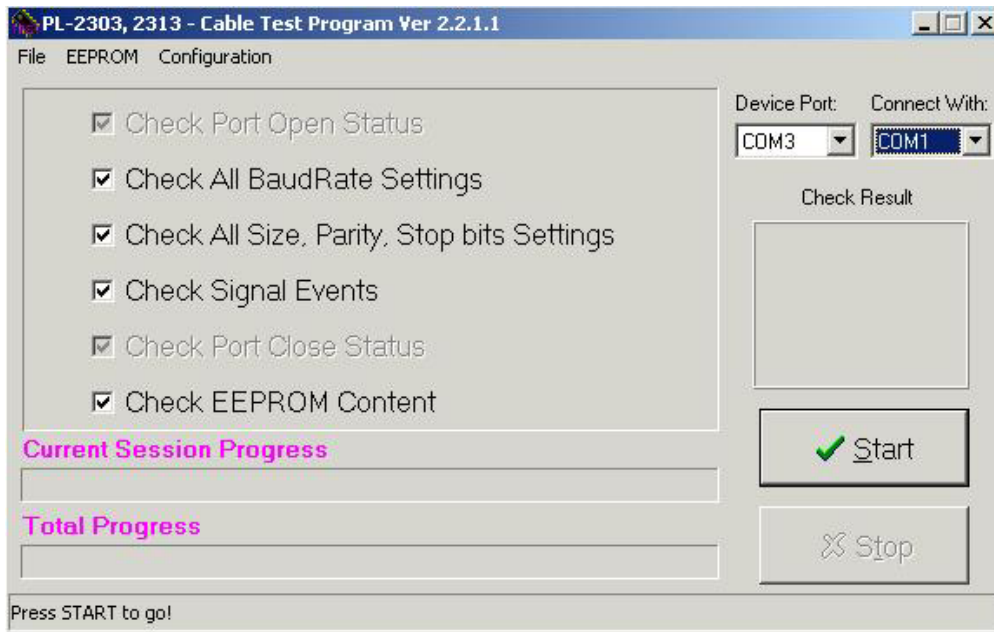
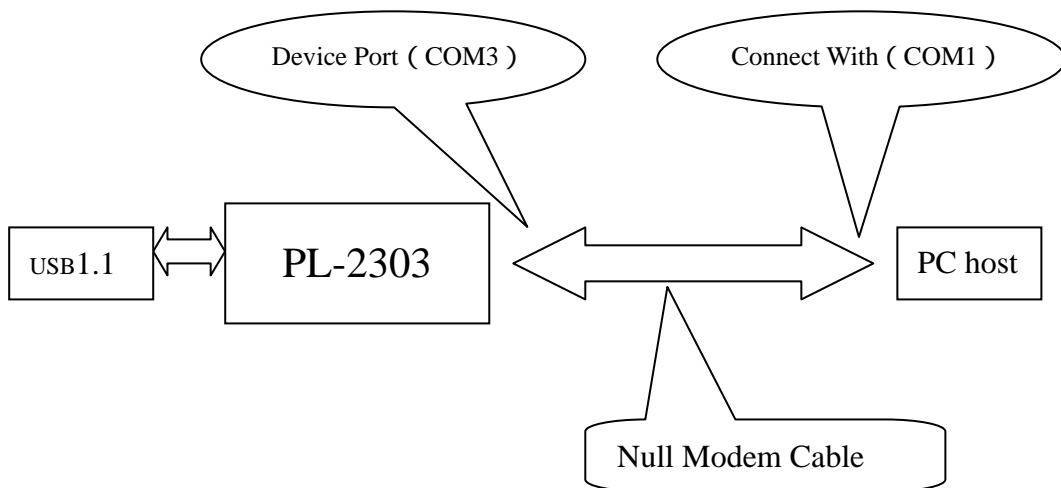


PL-2303, 2313 Cable Test Program Manual

1. Click on “CblTestV2.2.1.1.exe”

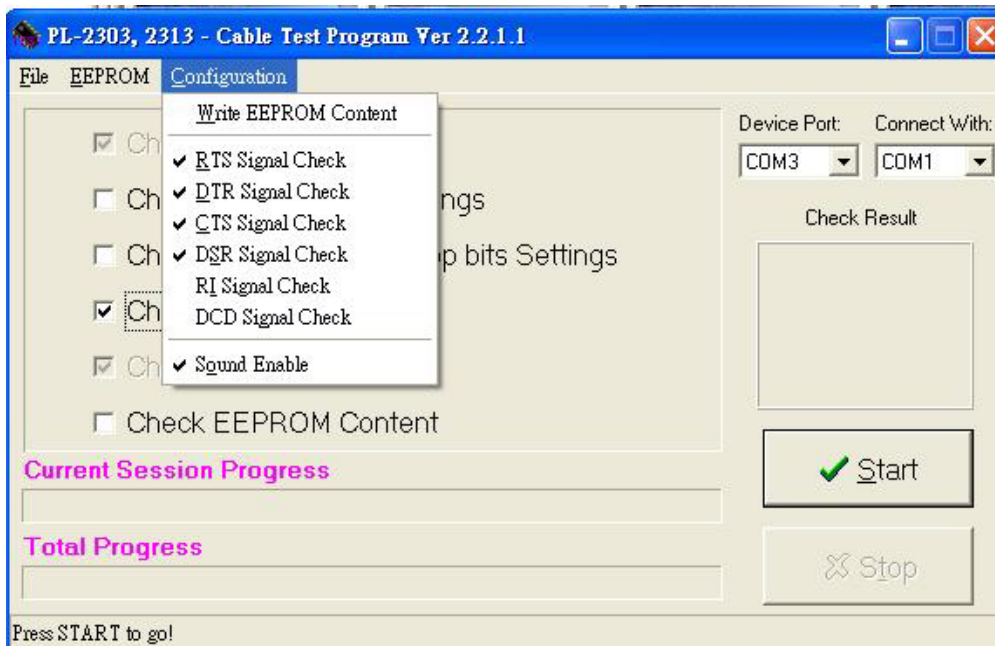


2. Select the Device Port and Connect With (for instance COM3 and COM1)



PL-2303, 2313 Cable Test Program Manual

3. If you want to test RTS signal , DTR signal, CTS signal,...etc. Click Configuration button,



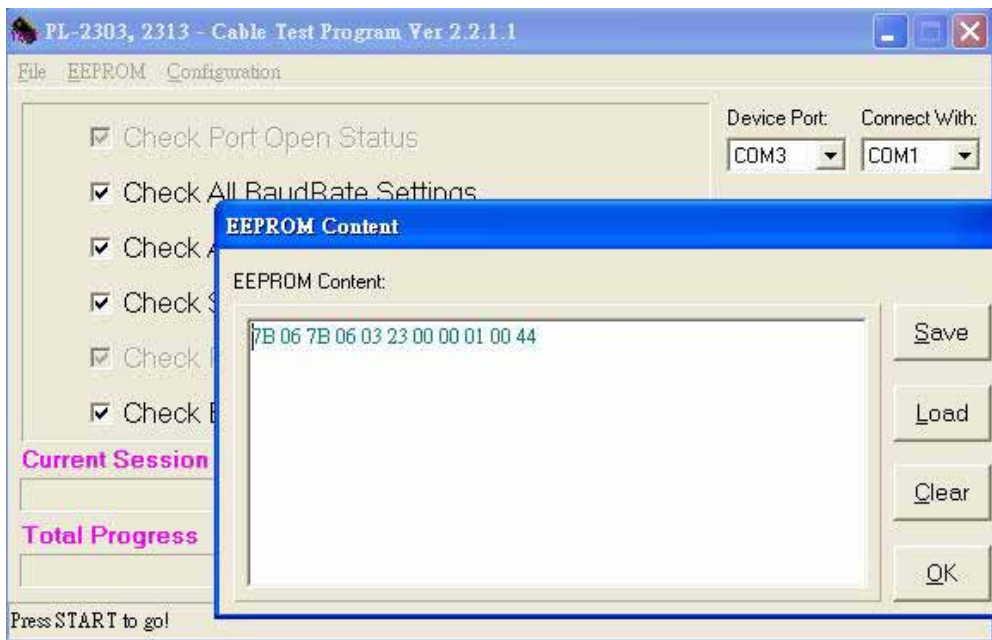
When you check “RI Signal Check”, please must make short between RI (Pin9)and CTS(Pin8)on Device Port (for instance COM3). If you check “DCD Signal Check”, please must make short between DCD (Pin1) and DSR (Pin6) on Device Port (for instance COM3)

4. If you want to test EEPROM Content, click EEPROM/Content button. Please fill in the blanks with suitable words. Such as “7B 06 7B 06 03 23 00 00 01 00 44”, if you only fill six bytes, such as “7B 06 7B 06 03 23”, the Cable Test Program will verify six bytes. The content of EEPROM is shown in Table 1 below. As for parameter of EEPROM Content, please refer to EEWriter.ini of EEPROM Writer.

Table 1. EEPROM Content

Bytes	Name	Description
1:0	EECHK	EECHK When the EEPROM is programmed, these two bytes is configured as 067B.After reset, they will be checked for the value. If matched, the following information will be loaded as the default parameters.
3:2	VID	USB Vendor ID
5:4	PID	Product ID
7:6	RN	Release number (BCD)
10:8	DCR	Device Configuration Register

PL-2303, 2313 Cable Test Program Manual



5. Press Start button to go, you will see the test result.

